

**+30**  
YEARS of  
Expertise

Made in EU



# AMX-9-DSP4-ACD

DIGITAL AUTOMATIC PRE-AMPLIFIER



© 2025 Phoenix Professional Audio GmbH | All rights reserved - Pictures can differ. Deviations in design, colours and technical details are possible without notice.



Fig.: AMX-9-DSP4-ACD, front & back

# AMX-9-DSP4-ACD

Digital automatic pre-amplifier

**8 UNIVERSAL INPUTS TO XLR DEESSER PHANTOM POWER MP3 PLAYER 10 IN & 5 OUTS**

Digital automatic pre-amplifier with 8 universal inputs to XLR (MIC.-LINE by DIP switch), USB/SD MP3 player with BT receiver, 10 input and 5 output PEQ, audio matrix, De-Esser with FULL, SPLIT, AIR functions, delays, feedback limiter and more.

The **AMX-9-DSP4-ACD automatic pre-amplifier** is especially developed for uses in acoustically challenging buildings (architectural acoustic). The device is used in places, where most of the other devices bring no positive results or where a complete „rack“ with system components would have to be built up to achieve a reasonable acoustic result.

The 8 universal inputs are shiftable by DIP switch between MIC.- and LINE sensitivity. Each of the 8 universal inputs has shiftable phantom power and a HPF filter (100 Hz).

The universal inputs are equipped with shiftable automatic microphone system (DSDf), DIGITAL SIGNAL DELAY FIELD system. The release of all recorded microphones is carried out automatically and is controlled and supervised by the processor system (DSDf).

By the input matrix (DIP switch) „MAINSUM-1“ and „MAINSUM-2“ all 8 input channels can be allocated to the „MAINSUM-1“ DSP outputs 1 to 3 and „MAINSUM-2“ to the DSP outputs 1 to 3 and 4.

All settings of the matrix, the DSDf system, priority or conference programming are described in the product manual.

The devices are suitable as desktop version as well as for 19“ installation.



Fig.: MP3 player remote control

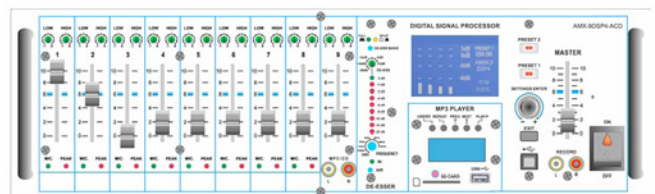


Fig.: Model AMX-9-DSP4-ACD, details front



Fig.: Model AMX-9-DSP4-ACD, details back



Technical Data	AMX-9-DSP4-ACD
<b>Ambient temperature</b>	5 to + 40 C
<b>Audio output</b>	MIX OUT, POST-MASTER, PRE-MASTER, REC OUT
<b>Audio input line</b>	unbalanced LINE IN to RCA (input 9) or jack LINE-IN (0.1V-1.5V)
<b>Automatic mixer</b>	DIGITAL SIGNAL DELAY FIELD, BARRIER-GATE, GATE-OPEN-CONTROL
<b>Automatic MODES</b>	Yes, automatic activation preset-2, daily / weekly / monthly / yearly programs
<b>Construction</b>	The amplifier is suitable as desktop version as well as for 19" installation (3 U)
<b>Colour</b>	graphite
<b>Conference configuration / priority</b>	Yes, by hardware configuration (DIP switch) for inputs 1 to 8
<b>DeEsser</b>	FULL SPLIT and AIR function
<b>Delay</b>	4 x delays (OUT 1-4) and internal power amplifiers in the range of 0.0 to 249,75 mS, 84 m
<b>Delay (system)</b>	to 170 meter
<b>Digital &amp; analogue volume controls</b>	analogue for channels 1 to 9, digital for outputs 1 to 4
<b>Dimensions</b>	443 mm (W) x 135 mm (H) x 340 mm (D) desktop housing, 19" installation by mounting brackets
<b>Display</b>	LC display
<b>DSP version</b>	DSP4
<b>Installation height</b>	3 U
<b>Input automatic system (GATE)</b>	Fully automatic digital system
<b>Equalization parametric EQ</b>	20-20kHz/-20+12dB/0.05-3db/oct)
<b>Equalization parametric EQ @ output</b>	4 x 5 PEQ, 20Hz-21.00Hz, +-12dB, @ 0.05oct-3.00oc
<b>Equalization parametric EQ @ input</b>	10 x PEG 20Hz-21.0kHz, +-12dB,@ 0.05 oct-3.00 oct
<b>Expander compressor limiter</b>	Shiftable for all 8 microphone inputs (setting by trimmer internally)
<b>Feedback limiter</b>	MODES: automatic (ADAPTABILITY) with 10 notch filters, MODES: PHASE SHIFTER with frequency 1.7Hz, 2.0Hz, 3.0 Hz
<b>Fixing</b>	19" mouting brackets (L/R)
<b>Frequency response</b>	40 Hz to 22.000 Hz@-3dB
<b>Gain (system)</b>	-60dB to +6dB
<b>Gain control</b>	For all mic.-LINE inputs, analogue at the device's rear side, digital in the device configurator
<b>Harmonic distortion</b>	better than 0.1 %
<b>HPF filter</b>	100 Hz, 6 dB/oct.
<b>IN1/IN2 to OUT4 Matrix</b>	yes, in the device configurator
<b>Interface</b>	USB-Master (PC), RJ-45 remote control
<b>LF/HF filter (EQ)</b>	per input@+/-12 dB, 100 Hz, 10 kHz
<b>Limiter</b>	SLOW/NORMAL/FAST: IN1 and IN2 signal limiter (-30dB to +6dB) in the device configurator

<b>Line outputs (process DSP)</b>	DSP OUT: 1 to 4 signal process out, balanced to XLR-Neutrik, 100mV-1V, 10K
<b>Mains filter</b>	Yes
<b>MP3 player</b>	With USB/SD ports and BT receiver
<b>Noise gate [LEVEL/ATTACK/RELEASE]</b>	-90db/-3dB(300us-5000us)(1ms-3000ms)
<b>Password protection</b>	Yes, in the device configurator
<b>PEQ filter (output)</b>	PEAKING EQ, LoSH6, LoSH12, HiSH6, HiSH12
<b>PEQ filter (input)</b>	PEAKING EQ, LoSH6, LoSH12, HiSH6, HiSH12
<b>Phantom power feed</b>	Shiftable 24VDC (DIP switch)
<b>Presets</b>	Preset-1, Preset-2 with clear text
<b>Priority input (MIC/LINE)</b>	Yes
<b>REC-OUT</b>	Yes
<b>Remote control</b>	Option: PV-DSP4F, presets remote activation
<b>Signal contacts</b>	Yes
<b>Software version</b>	EASY MANAGER 2.0
<b>Time synchronization</b>	No, settings are done in the device configurator (RTC)
<b>Tone control inputs</b>	LOW 100Hz, HIGH 10kHz, +-12dB (Q-filter)
<b>Unweighted signal-to-noise ratio</b>	Better than 90dB@, software NOISE GATE setting
<b>Voltage supply</b>	230VAC / 50Hz / 60Hz
<b>Weight</b>	approx. 4 kg

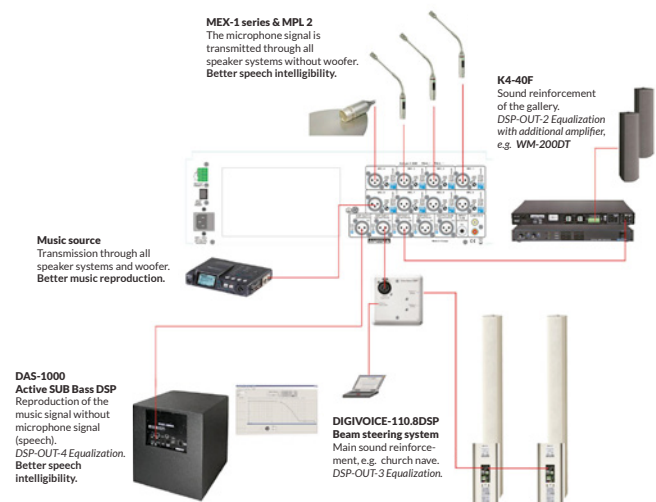


Fig.: Model AMX-9-DSP4-ACD system configuration for speech and music transmission (system with active subwoofer and DIGIVOICE DSP beam steering line arrays)



- Input audio matrix „MAINSUM-1“ and „MAINSUM-2“
- COMPRESSOR EXPANDER function
- DeEsser with FULL, SPLIT, AIR functions
- MP3 player with BT receiver
- 8 inputs to XLR (MIC.-LINE by DIP switch)
- LINE input (LINE-9 IN) to Cinch
- 8 x input GAIN control
- 10 input parametric EQ
- 2 PRESETS
- Digital NOISE GATE and LIMITER (software)
- CROSSOVER (an allocation of the inputs 1 to 7 to output 4, or inputs 8 to 9 to output 4)
- Calendar function (automatic shift to PRESETS-2)
- RS 485 REMOTE interface for cable remote control, manual shift between the presets
- 4 x 5 output parametric EQ, 4 delays, 4 volume controls and automatic feedback limiter (sum)
- 4 DSP outputs, the output No. 4 can be configured as X-over SUB output
- PRE-MASTER EQ output (balanced to XLR)
- 4 x POST-MASTER outputs DSP (balanced to XLR)
- PRE-MASTER input (balanced to 3-poled jack)
- Connection for cable remote control INPUT PANEL PRESET (RJ 45)
- INFO OUT PRESET 2 (control with 2 x make contact) for f.i. connection of additional speaker lines at PRESET 2
- Output RECORD for recording devices
- System software EASY-MANAGER 2.0

All these setting possibilities provide a **precise room equalization** and best adaption to the room acoustics.

Besides this, the mixing amplifiers have an **additional speaker line with separate volume control and SOFT START** adjustable in the system (standard setting 5 sec.).

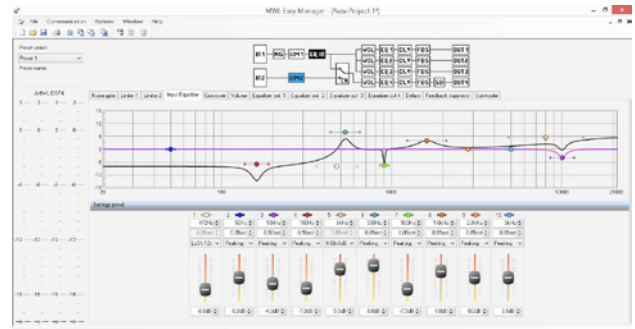


Fig.: Model AMX-9DSP4-ACD system software / screenshot input equalizer



Further details - Product descriptions



AMX-9-DSP4-ACD >>



**ONLINESHOP** *link:*



[AMX-9-DSP4-ACD >>](#)



**[www.phoenix-pa.com](http://www.phoenix-pa.com) • [www.phoenix-pa.com/shop](http://www.phoenix-pa.com/shop)**

Tel.: +49 (0) 8062 908 49 84 | Fax: +49 (0) 8062 728 37 37 | E-Mail: [info@phoenix-pa.com](mailto:info@phoenix-pa.com)

**PHOENIX PROFESSIONAL AUDIO GMBH**

Hermann-Oberth-Str. 12  
D-83052 Bruckmühl / Germany